



DigiMap Data Services Inc

DMTrack Solutions



Wi-Sys Communications Inc.

Security Vehicle Monitoring

DigiMap Data Services Inc and Wi-Sys Communications have partnered to provide a cost effective business tool to assist you with managing your fleet of security vehicles.

Communicating over your “existing” mobile radio infrastructure, the DMTrack Mapping software, combined with the in-vehicle WS712X intelligent GPS tracking device, provides integrated voice, data and vehicle tracking capability. Fleet Managers can now monitor and coordinate the real-time activities of their security vehicles.

The WS712X can be configured to provide Automatic Vehicle location (AVL) features such as time/distance/heading reporting as well as data on vehicle stops, door openings and emergencies.

DMTrack maintains all historical reporting information such as route start and stop time, and provides real-time graphic displays on vehicle activity. The software can generate numerous reports based on the information received, providing you with information to help you better maintain operational service levels.

The system utilizes your existing radio communications infrastructure for data and voice communications providing you with cost benefits over operating on Public Data networks that charge ongoing monthly air-time fees. All data transmissions are totally coordinated with your existing voice communications activity.



Improved Operator Safety
and
Client Reporting

Features:

- ◆ Real-time location of security vehicles displayed on DMTrack system
- ◆ Improved operator safety by providing emergency alarms and vehicle tracking
- ◆ Comprehensive reports such as vehicle stops, idle periods and route duration.
- ◆ Comprehensive Reports on Client Site Servicing Activity
- ◆ Operates on Conventional and Trunked radio systems.
- ◆ Real-time Text Messaging when combined with Kenwood 80-series radios



DigiMap Data Services Inc

DMTrack Solutions



Wi-Sys Communications Inc.

Security Vehicle Monitoring:

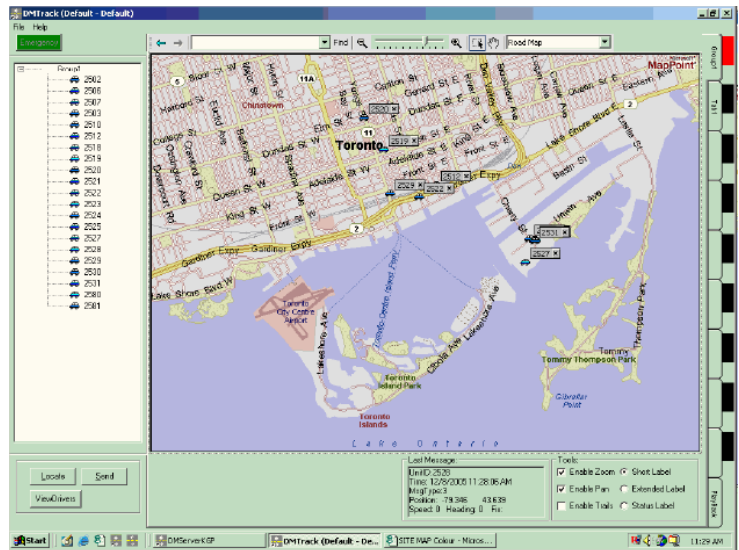
DMTrack provides you with a graphical interface to monitor and report on time and vehicle activity, including real time information on actual times of all vehicle stops. This information is invaluable for immediate response to client servicing inquiries, documenting operational service levels and can lead to reduced liability in the provision of security services.

DMTrack Software:

DM Track software is a client hosted AVL application designed specifically for commercial users who need fast updates on the location and status of all of their vehicles. You can configure multiple map displays to view groups of vehicles, and automatically pan the display to always keep them in view.

Features:

- ◆ Manual and Automatic Continuous Location Monitoring
- ◆ Emergency Alert Monitoring
- ◆ Activity report generation
- ◆ Real and simulated activity playback



WS 712X Hardware:

The WS712X is an in-vehicle Intelligent GPS tracking module that monitors operational events such as position, over-speed, ignition On/Off and transmits this real-time data over Conventional and Trunk Radio systems.

Features:

- ◆ Stores up to 8,000 events and 400 waypoints
- ◆ Monitor vehicle speed, movement and stop events
- ◆ Monitor ignition, door open/close inputs
- ◆ GPS antenna disconnect alarm event



DigiMap Data Services Inc
 40 Kodiak Cres, Unit 13
 Toronto, Ontario, M3J 3G5
 Tel: 1-877-344-4627
 Fax: 416.633.3248
www.digimap.com

Wi-Sys Communications Inc.
 31B Richardson Side Road
 Ottawa, Ontario, K2K 0A1
 Tel: 613.254.7386
 Fax: 613.254.7388
www.wi-sys.com