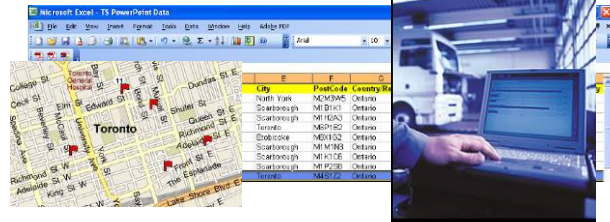


A simple, powerful and affordable multi-vehicle scheduling tool

Evaluate existing routes

- ◆ durations, costs, order/sequence
- ◆ constraints compliance
- ◆ from your own reports
- ◆ from a vehicle tracking service



Optimize, re-organize the routes

- ◆ select the routes to be optimized
- ◆ improve vehicles trips
- ◆ better customer distribution
- ◆ fill-in ratio optimization
- ◆ re-dimension the size of your fleet

Item	Duration	Time	Duration	Status	Quantity
V_3					
Start	7:00:00	0:00:00	On time		
PP_138	0:08:15	7:08:15	0:20:00	On time	10
PP_138	0:06:14	7:14:29	0:20:00	On time	10
PP_145	0:06:32	6:51:00	0:20:00	On time	10
PP_110	0:02:25	8:23:25	0:20:00	On time	10
PP_128	0:04:29	8:48:05	0:20:00	On time	10
PP_30	0:05:01	8:13:06	0:20:00	On time	10
PP_32	0:01:16	9:34:22	0:20:00	On time	10
PP_117	0:02:10	5:56:32	0:20:00	On time	10
PP_135	0:15:48	10:30:21	0:20:00	On time	10
PP_101	0:02:29	10:53:50	0:20:00	On time	10
PP_103	0:03:26	11:17:16	0:20:00	On time	10
PP_102	0:03:18	11:40:34	0:20:00	On time	10
Lunch	12:00:00	1:00:00	On time		
PP_124	0:04:57	1:05:21	0:20:00	On time	10
PP_125	0:06:55	1:32:21	0:20:00	On time	10
PP_114	0:14:24	14:06:50	0:20:00	On time	10
PP_110	0:04:42	14:31:32	0:20:00	On time	10
PP_33	0:10:49	15:02:21	0:20:00	On time	10
Return	0:25:16	15:51:27	0:00:00	On time	

Transfer results

- ◆ Excel, Word or text format
- ◆ draw routes, print maps
- ◆ to drivers, other departments...
- ◆ to your vehicle tracking service provider

Item	Duration	Time	Duration	Status	Quantity
Start	7:00:00	0:00:00	On time		
PP_138	0:08:15	7:08:15	0:20:00	On time	10
PP_138	0:06:14	7:14:29	0:20:00	On time	10
PP_145	0:06:32	6:51:00	0:20:00	On time	10
PP_110	0:02:25	8:23:25	0:20:00	On time	10
PP_128	0:04:29	8:48:05	0:20:00	On time	10
PP_30	0:05:01	8:13:06	0:20:00	On time	10
PP_32	0:01:16	9:34:22	0:20:00	On time	10
PP_117	0:02:10	5:56:32	0:20:00	On time	10
PP_135	0:15:48	10:30:21	0:20:00	On time	10
PP_101	0:02:29	10:53:50	0:20:00	On time	10
PP_103	0:03:26	11:17:16	0:20:00	On time	10
PP_102	0:03:18	11:40:34	0:20:00	On time	10
Lunch	12:00:00	1:00:00	On time		
PP_124	0:04:57	1:05:21	0:20:00	On time	10
PP_125	0:06:55	1:32:21	0:20:00	On time	10
PP_114	0:14:24	14:06:50	0:20:00	On time	10
PP_110	0:04:42	14:31:32	0:20:00	On time	10
PP_33	0:10:49	15:02:21	0:20:00	On time	10
Return	0:25:16	15:51:27	0:00:00	On time	

Item	Duration	Time	Duration	Status	Quantity
Start	7:00:00	0:00:00	On time		
PP_138	0:08:15	7:08:15	0:20:00	On time	10
PP_138	0:06:14	7:14:29	0:20:00	On time	10
PP_145	0:06:32	6:51:00	0:20:00	On time	10
PP_110	0:02:25	8:23:25	0:20:00	On time	10
PP_128	0:04:29	8:48:05	0:20:00	On time	10
PP_30	0:05:01	8:13:06	0:20:00	On time	10
PP_32	0:01:16	9:34:22	0:20:00	On time	10
PP_117	0:02:10	5:56:32	0:20:00	On time	10
PP_135	0:15:48	10:30:21	0:20:00	On time	10
PP_101	0:02:29	10:53:50	0:20:00	On time	10
PP_103	0:03:26	11:17:16	0:20:00	On time	10
PP_102	0:03:18	11:40:34	0:20:00	On time	10
Lunch	12:00:00	1:00:00	On time		
PP_124	0:04:57	1:05:21	0:20:00	On time	10
PP_125	0:06:55	1:32:21	0:20:00	On time	10
PP_114	0:14:24	14:06:50	0:20:00	On time	10
PP_110	0:04:42	14:31:32	0:20:00	On time	10
PP_33	0:10:49	15:02:21	0:20:00	On time	10
Return	0:25:16	15:51:27	0:00:00	On time	

Simple and fast implementation :

- Minimum training
- Standard Office tools
- Easy integration with the information system
- Data samples, on-line help

Readily usable results :

- Accurate and clear itinerary mapping
- Results per route or for all the routes
- Numerous exports (planning, roadbooks) to Excel, Word or Text format
- Manual planning adjustments
- E-mail to a vehicle tracking service

Savings in numerous areas :

- Adapted fleet size
- Planning time
- Vehicles fill-in ratios
- Operations costs
- Homogenous and manageable deployment

Major constraints and parameters handled (more than 60 constraints and settings)

Customers

Delivery constraints

- Quantity (up to 8 dimensions/products)
- Possible visit days
- Requested characteristics (skills, vehicle, ...)
- Drive through restricted areas (avoid areas)

Time control

- Visit time windows (customer availability)
- Punctuality, delay penalty
- Fixed and per unit unloading time

Management of existing routes

- Original vehicle ID
- Visit sequence number
- Ensure the same vehicle performs the route

Vehicles

Delivery constraints

- Capacity (up to 8 dimensions/products)
- Drivers working days
- Vehicle/driver characteristics

Time control

- Working times, lunch break
- Drivers hours legislation
- Overtime periods
- Fixed and per unit loading time
- Trips over several days (with night breaks)

Costs management

- Cost/Km, cost/hr, night breaks costs
- Fixed costs of use / non-use
- Overtime costs

A solution adapted to your business :

Transport & Logistics

- Operations costs reduction
- Fill-in ratio improvement

Automatic vending

- Better coherence of routes
- Functional time gain

Home services

- Visit time windows management
- Required characteristics matching

Multi-compartmented distribution

- Fixed or mobile compartments fill-in optimization
- Operations costs reduction

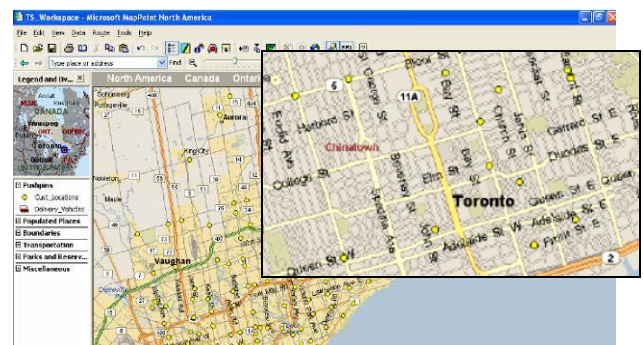
Canvassing/prospecting

- Better inclusion in budget / better forecast
- Planning over several weeks

Maintenance/After sales services

- Vehicle/Driver and Customer needs matching
- Optimized route plan

And Microsoft MapPoint's functionalities :



Map and see the key data of your company (customers geographical locations, revenues by regions or territories, ...), prepare a business trip, find out the best location for your new outlets, etc.

DigiMap Data Services Inc

40 Kodiak Cres, Unit 13
Toronto, Ontario
M3J 3G5

Phone 1-877-344-4627 Fax 416.633.3248
sales@digimap.com <http://www.digimap.com/>

System requirements

TourSolver for Microsoft MapPoint runs on Microsoft Windows 98, NT4 sp6, 2000, Millenium, XP and requires Microsoft MapPoint 2002. Minimum RAM requirements : 256 Mb (384 Mb under Windows XP) Microsoft Office Suite recommended for easier results analysis

Learn more about Magellan Ingénierie's product range, extension and integration possibilities, software developer kits : www.magellan-ing.fr

[Click here to schedule a free demo !](#)